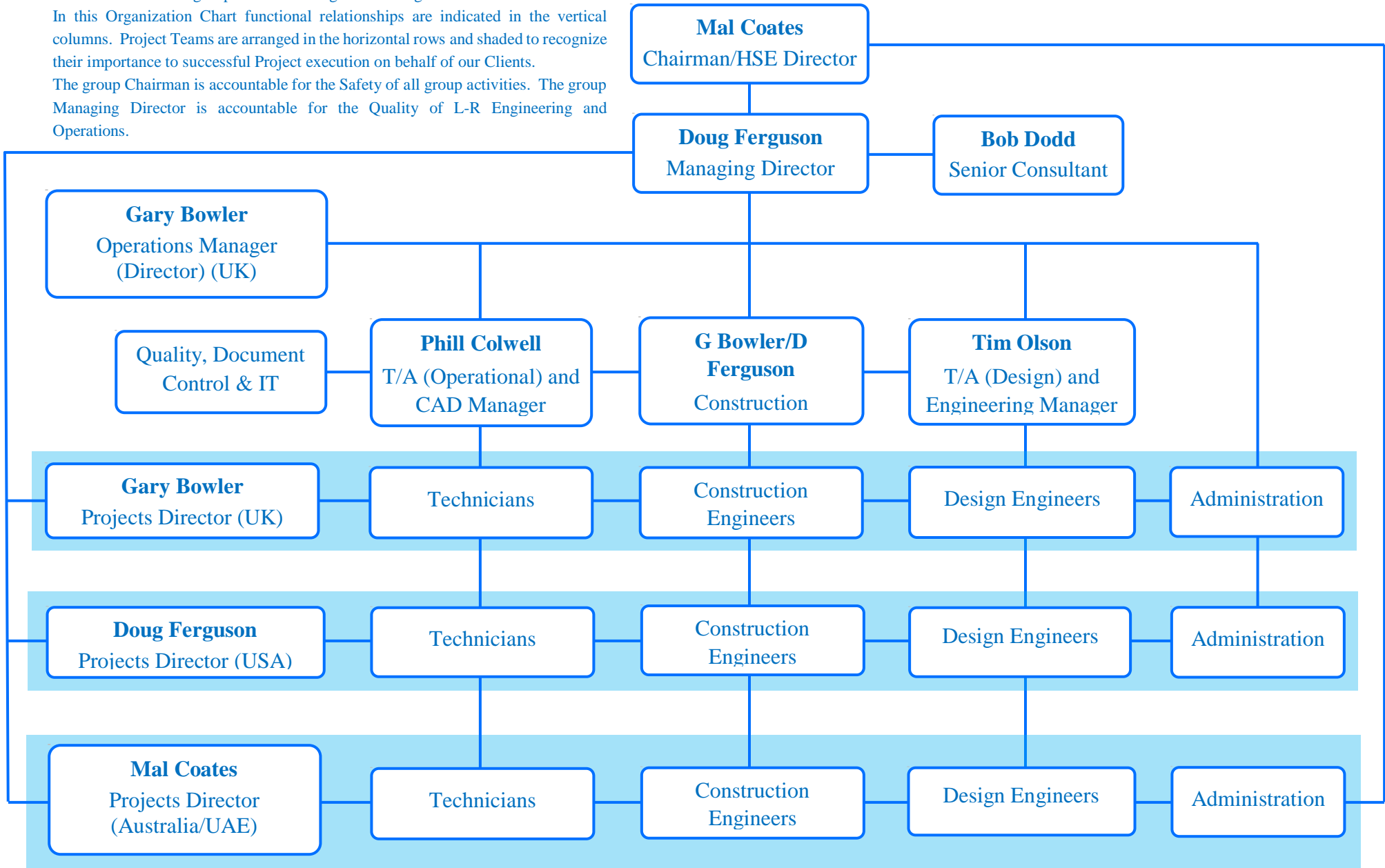




The Lowther-Rolton group functions using a matrix organization. In this Organization Chart functional relationships are indicated in the vertical columns. Project Teams are arranged in the horizontal rows and shaded to recognize their importance to successful Project execution on behalf of our Clients. The group Chairman is accountable for the Safety of all group activities. The group Managing Director is accountable for the Quality of L-R Engineering and Operations.





Lowther-Rolton undertakes Projects using the structure indicated in this chart.

Project Teams are assembled to ensure successful Project execution on behalf of our Clients.

Reporting to the Project Director, Project Managers shall be senior staff members with skills and experience which reflect the Project scope and requirements.

The group Chairman is accountable for the Safety of all L-R Project activities.

The group Managing Director is accountable for the Quality of L-R Engineering and Operations.

